



JBL Tune 520BT Wireless Headphone User Guide

[Home](#) » [JBL](#) » JBL Tune 520BT Wireless Headphone User Guide 

Contents

- [1 JBL Tune 520BT Wireless Headphone](#)
- [2 WHAT'S IN THE BOX](#)
- [3 JBL Headphones](#)
- [4 Power on & Connect](#)
- [5 Multi-point connection](#)
- [6 CONTROLS](#)
- [7 Charging](#)
- [8 Led behaviors](#)
- [9 TECH SPEC](#)
- [10 IC RF Exposure Information and Statement](#)
- [11 Documents / Resources](#)
 - [11.1 References](#)
- [12 Related Posts](#)

JBL

JBL Tune 520BT Wireless Headphone



WHAT'S IN THE BOX



SCAN ME



JBL Headphones

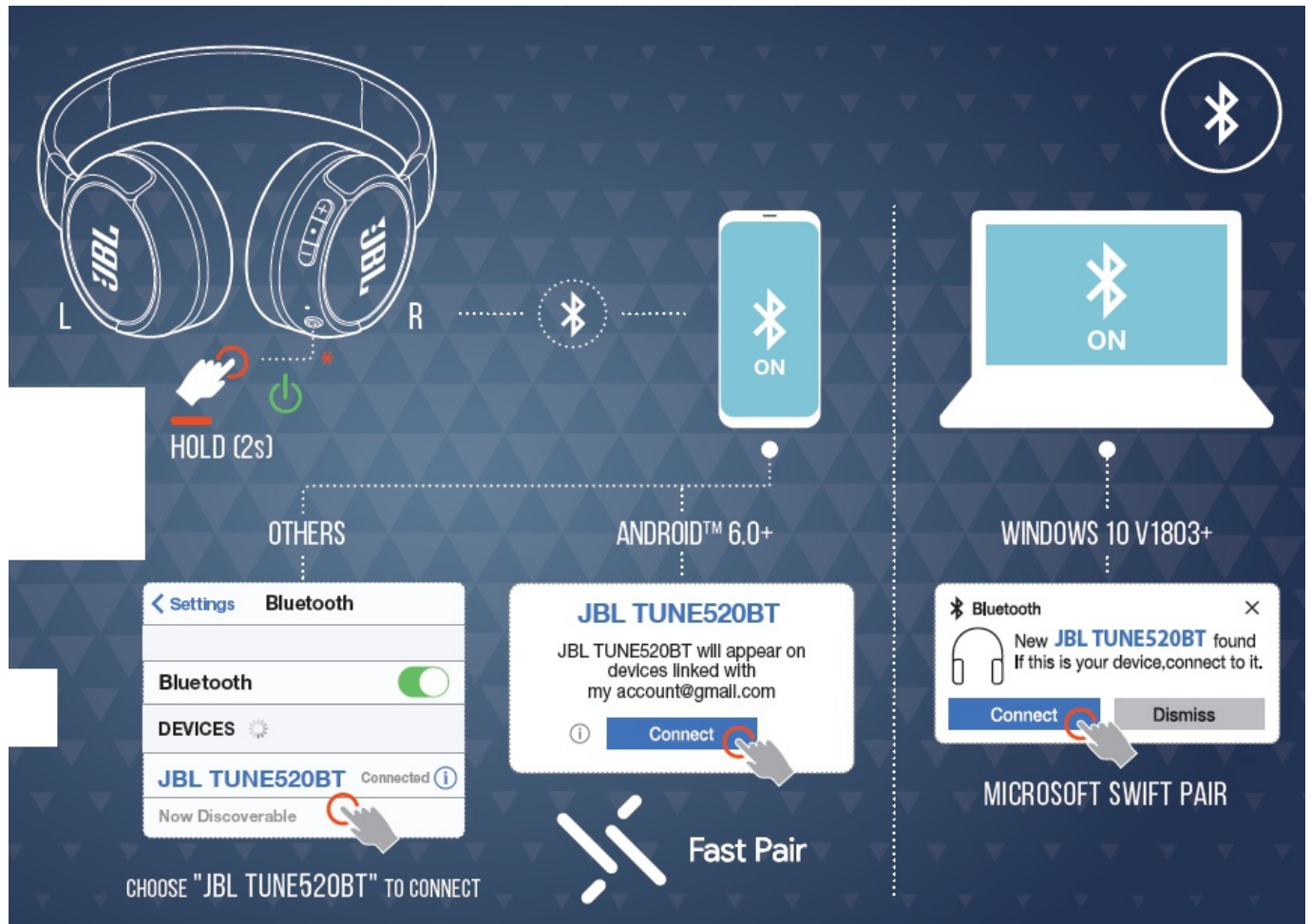


(FOR CHINA ONLY)

GET EVEN MORE CONTROL AND PERSONALIZATION OF YOUR LISTENING EXPERIENCE WITH THIS FREE APP

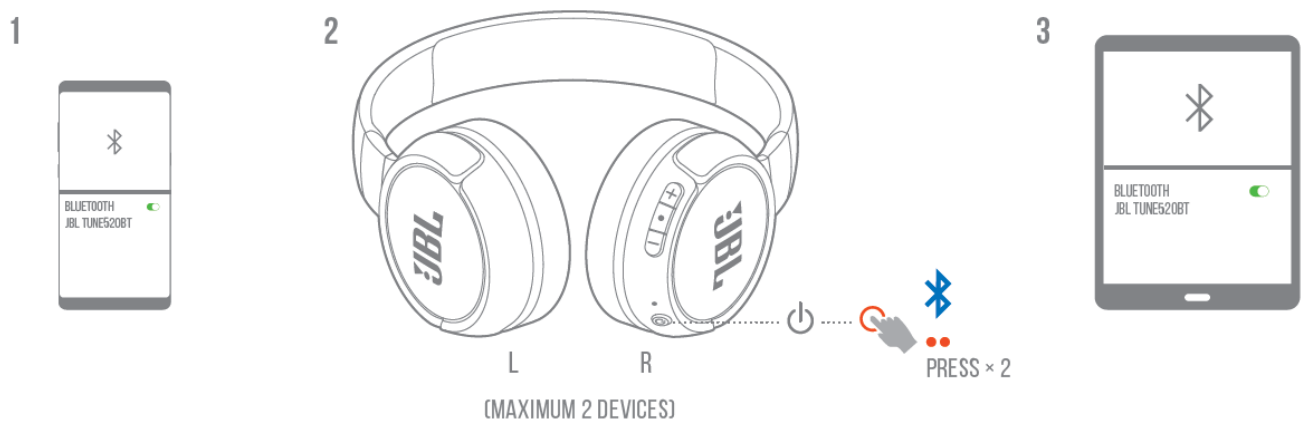


Power on & Connect

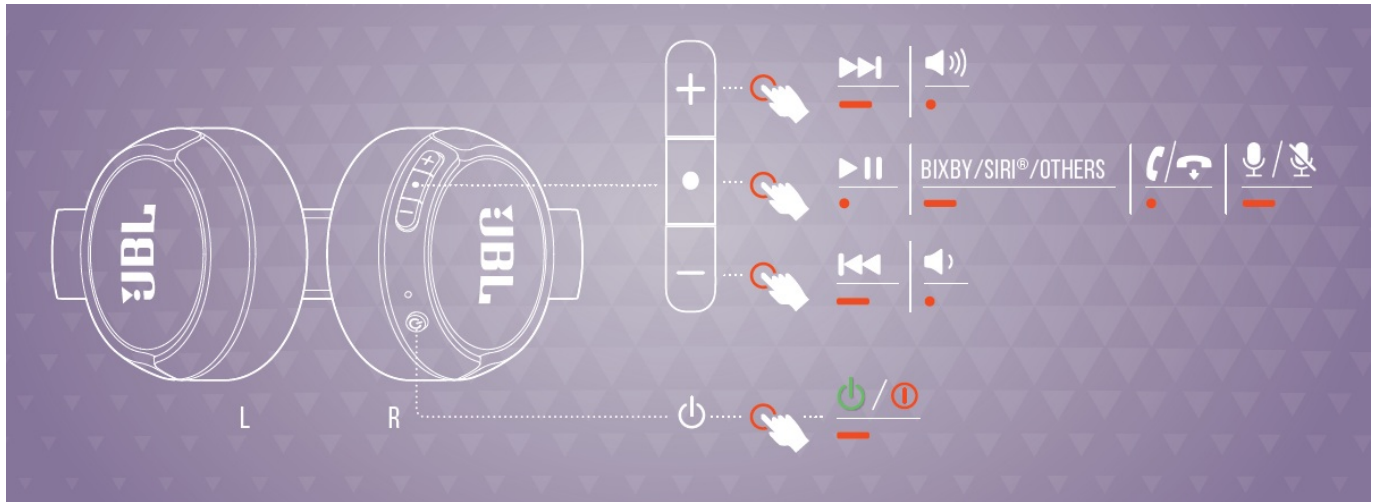


To enter pairing mode again, power off and hold for 5 seconds

Multi-point connection

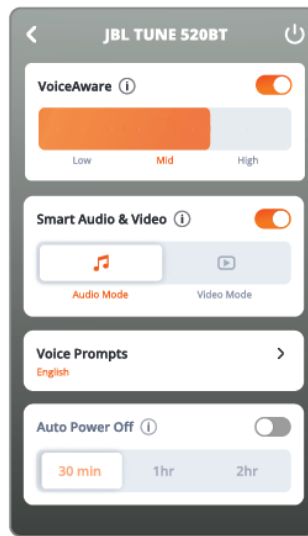
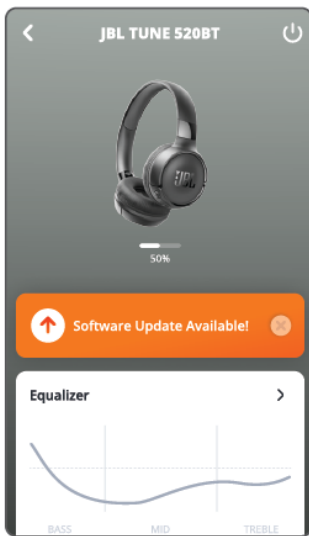


CONTROLS

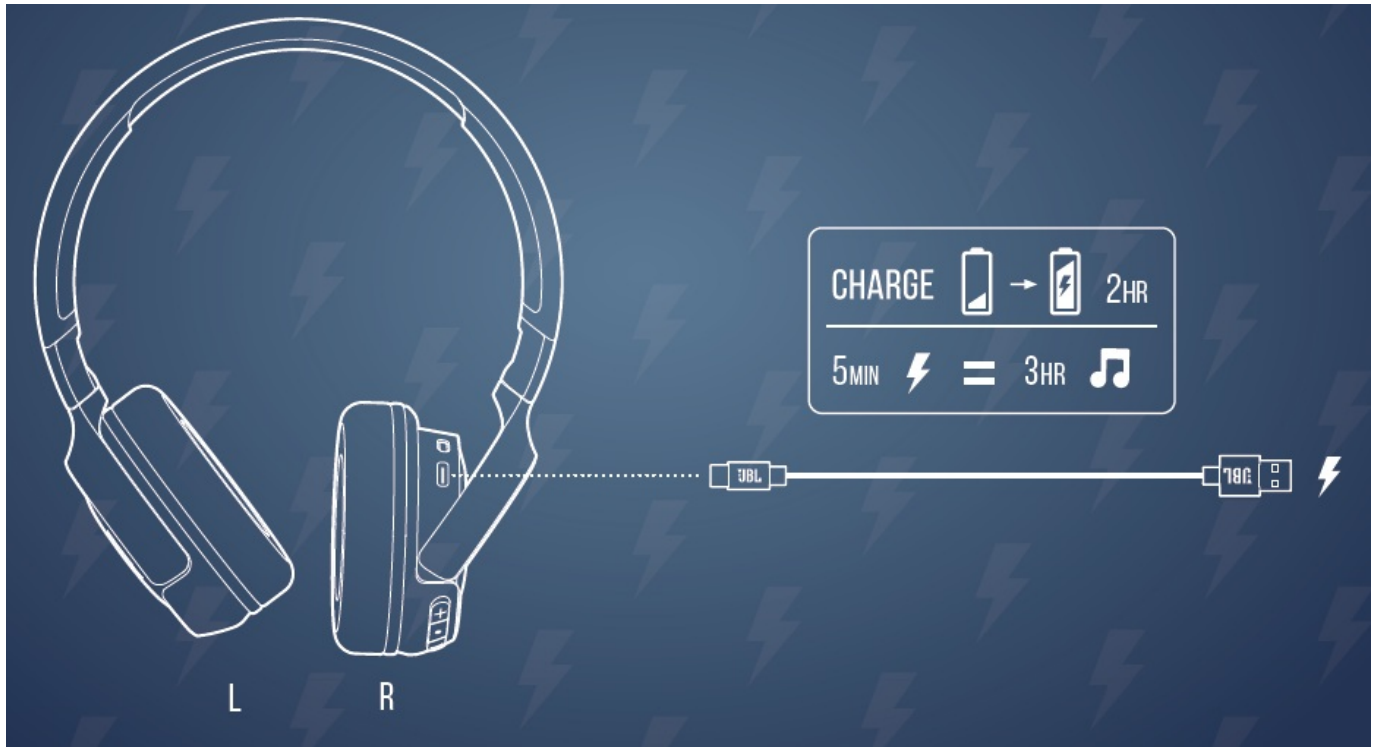


Enable advance controls by connecting your JBL TUNE520BT to JBL Headphones App

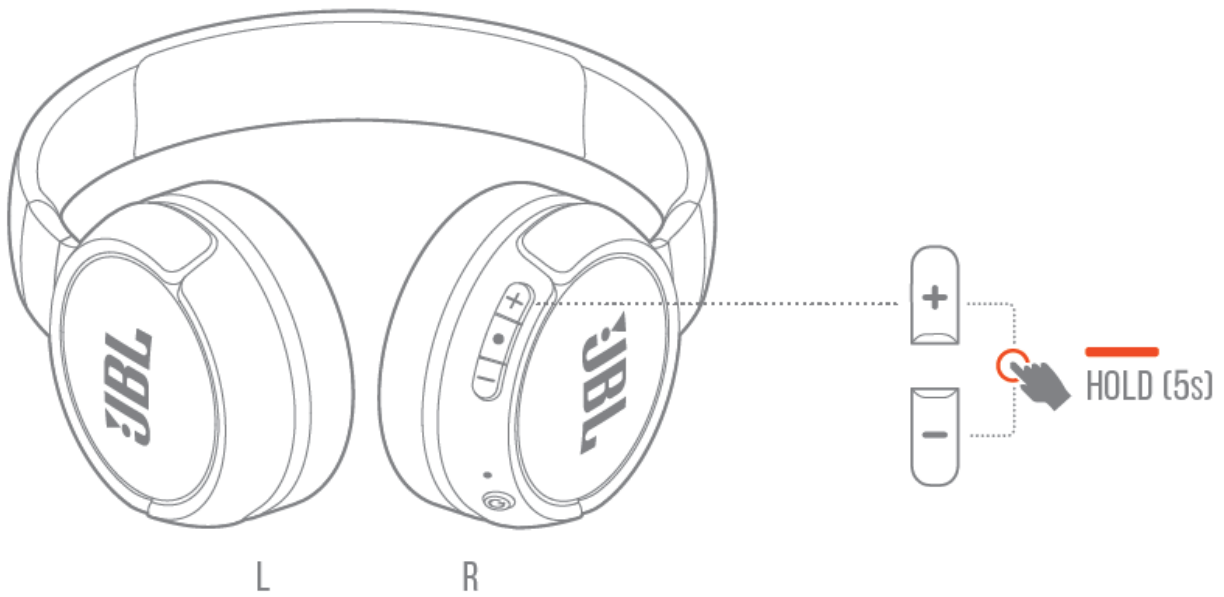
DO MORE WITH THE APP



Charging



FACTORY RESET



Led behaviors



TECH SPEC

- **Model:** TUNE520BT
- **Driver size:** 33 mm/ 1.3" Dynamic Driver
- **Power supply:** 5 V 1 A
- **Weight:** 157 g/ 0.35 lbs
- **Battery type:** Lithium-ion polymer (450 mAh/ 3.7V)
- **Charging time:** 2 hrs from empty
- **Music playtime with BT on:** Up to 57 hrs
- **Talk time:** Up to 35 hrs
- **Frequency response:** 20 Hz – 20 kHz
- **Impedance:** 30 ohm
- **Sensitivity:** 102 dB SPL@1 kHz
- **Maximum SPL:** 95 dB
- **Microphone sensitivity:** -40 dBV/Pa@1 kHz
- **Bluetooth version:** 5.3
- **Bluetooth profile version:** HFP 1.7.2, AVRCP 1.6.2, A2DP 1.3.2
- **Bluetooth transmitter frequency range:** 2.4 GHz – 2.4835 GHz
- **Bluetooth transmitter power:** ≤ 6 dBm (E.I.R.P)
- **Bluetooth transmitter modulation:** GFSK, $\pi/4$ -DQPSK, 8DPSK
- **Maximum operation temperature:** 45 °C

TO PROLONG BATTERY LIFESPAN, FULLY CHARGE AT LEAST ONCE EVERY 3 MONTHS. BATTERY LIFE VARIES BY USE AND SETTINGS.

IC RF Exposure Information and Statement

The SAR limit of Canada (C) is 1.6 W/kg averaged over one gram of tissue. Device types: (IC: 6132A-TUNE520BT) has also been tested against this SAR limit According to this standard, the highest SAR value reported during product certification for head use is 0.023 W/Kg.

The device was tested for typical bodily operations where the product was kept 0 mm from the head. To maintain compliance with IC RF exposure requirements, use accessories that maintain a separation distance of 0mm between the user's head and the back of the headset. The use of belt clips, holsters and similar accessories shall not contain metal parts in its assembly. Use of accessories that do not meet these requirements may not comply with IC RF exposure requirements and should be avoided.

Head operation

The device was subjected to a typical head manipulation test. In order to comply with RF exposure requirements, a minimum separation distance of 0 cm must be maintained between the user's ear and the product (including the antenna). Head exposure that do not meet these requirements may not meet RF exposure requirements and should be avoided. Use only the supplied or approved antenna

DO NOT ATTEMPT TO OPEN, SERVICE, OR DISASSEMBLE THE BATTERY | DO NOT SHORT CIRCUIT | MAY EXPLODE IF DISPOSED OF IN FIRE | RISK OF EXPLOSION IF BATTERY IS REPLACED BY AN INCORRECT TYPE | DISPOSE OR RECYCLE

USED BATTERIES ACCORDING TO THE INSTRUCTIONS

The Bluetooth® word mark and logos are registered trademarks owned by Bluetooth SIG, Inc., and any use of such marks by HARMAN International Industries, Incorporated is under license. Other trademarks and trade names are those of their respective owners

Product specifications and app screens are subject to change without notice.

Documents / Resources



[JBL Tune 520BT Wireless Headphone \[pdf\] User Guide](#)
Tune 520BT Wireless Headphone, Tune 520BT, Wireless Headphone, Headphone

References

- [Anatel — Agência Nacional de Telecomunicações](#)